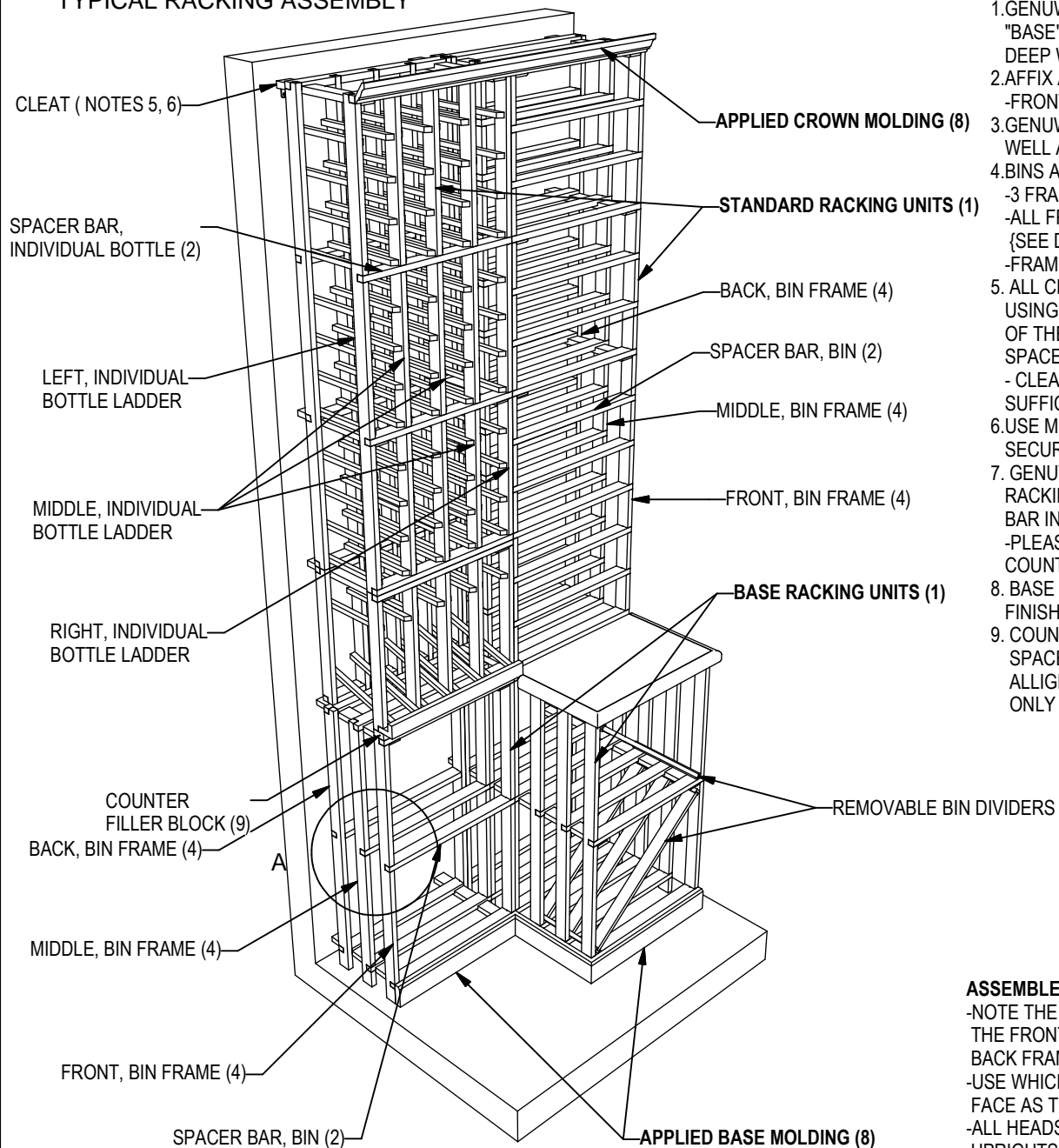
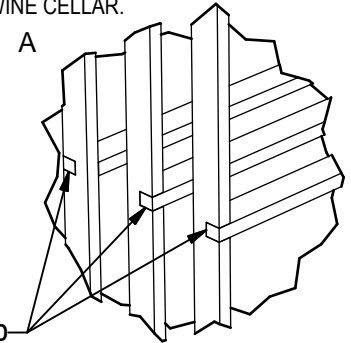


TYPICAL RACKING ASSEMBLY



NOTES:

1. GENUWINE CELLARS' VINTAGE RACK IS DESIGNED TO BE ASSEMBLED WITH A "BASE" SECTION OF RACKING @ 32 3/4" (832mm) IN HEIGHT, SINGLE OR DOUBLE DEEP WITH A VARIETY OF "STANDARD" SIZED SECTIONS TO BE STACKED ABOVE
2. AFFIX ALL SPACER BARS TO LADDERS (UPRIGHTS) WITH 18 GAUGE FINISHING NAILS
-FRONT FACE OF SPACER BAR TO BE FLUSH WITH FRONT FACE OF UPRIGHT
3. GENUWINE CELLARS RECOMMENDS USING A DROP OF GLUE ON ALL JOINTS, AS WELL AS 18 GAUGE FINISHING NAILS FOR ADDED SUPPORT
4. BINS ARE SHIPPED BROKEN DOWN INTO FRAMES; (FRONT, MIDDLE, AND BACK)
-3 FRAMES FOR SINGLE DEEP, AND 6 FRAMES FOR DOUBLE DEEP.
-ALL FRAMES ARE SIMILAR, BUT THEY ARE INSTALLED DIFFERENTLY {SEE DIAGRAM "A", THIS PAGE}
-FRAME SPACING IS DETERMINED BY BIN CLEATS
5. ALL CLEATS MUST BE AFFIXED TO THE UNDERSIDE OF SPACER BARS USING 18 GAUGE FINISHING NAILS. {THE ONLY EXCEPTION BEING AT THE TOP OF THE RACKING. HERE CLEATS MAY BE AFFIXED TO THE TOP SIDE OF THE SPACER BARS, AS THEY WILL BE HIDDEN BY THE CROWN MOLD}
- CLEATS MUST BE PLACED, ONE EVERY 4 SQUARE FEET TO PROVIDE SUFFICIENT STABILITY FOR RACKING
6. USE METAL ANGLE BRACKETS (SUPPLIED) AND PROPER SUPPORT SCREWS TO SECURE RACKING TO FINISHED WALL SURFACE
7. GENUWINE CELLARS RECOMMENDS SECURING COUNTER TOPS TO TOP OF RACKING WITH PRE-DRILLED SCREWS FROM BENEATH; THROUGH TOP SPACER BAR INTO COUNTER TOP
-PLEASE BE SURE TO USE PROPER LENGTH SCREWS AS NOT TO PIERCE TOP COUNTER FINISH
8. BASE & CROWN MOLDINGS TO BE AFFIXED TO RACKING WITH 18 GAUGE FINISHING NAILS
9. COUNTER TOP FILLER BLOCKS SHOULD BE PLACED UNDER THE FRONT AND BACK SPACERBARS OF THE ABOVE COUNTER RACKING TO SUPPORT THE RACKING AND ALLIGN IT PERFECTLY WITH THE RACKING SITTING ON COUNTERTOPS. TO BE USED ONLY WHEN COUNTER TOPS ARE USED IN THE WINE CELLAR.



ASSEMBLE ALL FRAME-STYLE RACKING AS PICTURED

- NOTE THE DIFFERENCE IN ORIENTATION BETWEEN THE FRONT AND MIDDLE BIN FRAMES, AND THE BACK FRAME
- USE WHICH EVER FRAME HAS THE BEST FRONT FACE AS THE FRONT FRAME
- ALL HEADS OF NAILS AFFIXING SPACER BARS TO UPRIGHTS MUST BE FACING THE REAR OF THE RACKING WHEN FINAL ASSEMBLY IS COMPLETE

GENUWINE CELLARS

Project: *CE-INSTALLATION INSTRUCTIONS*

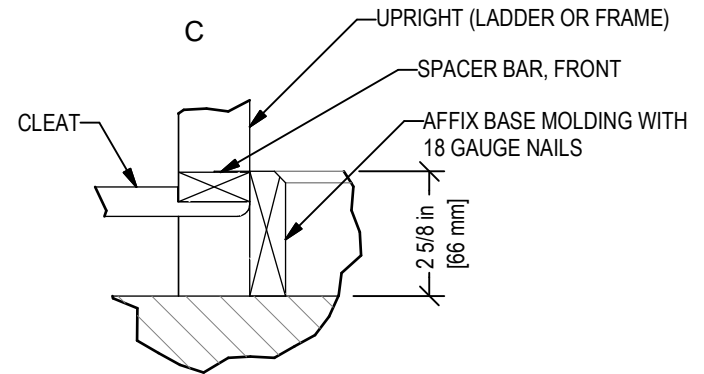
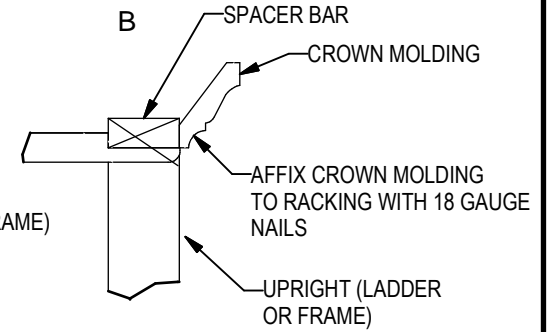
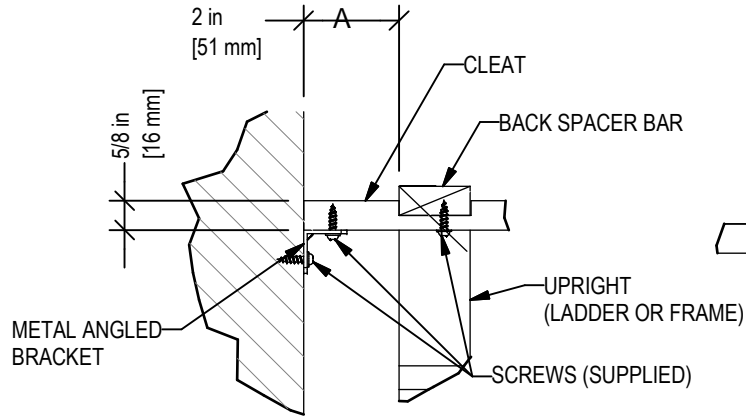
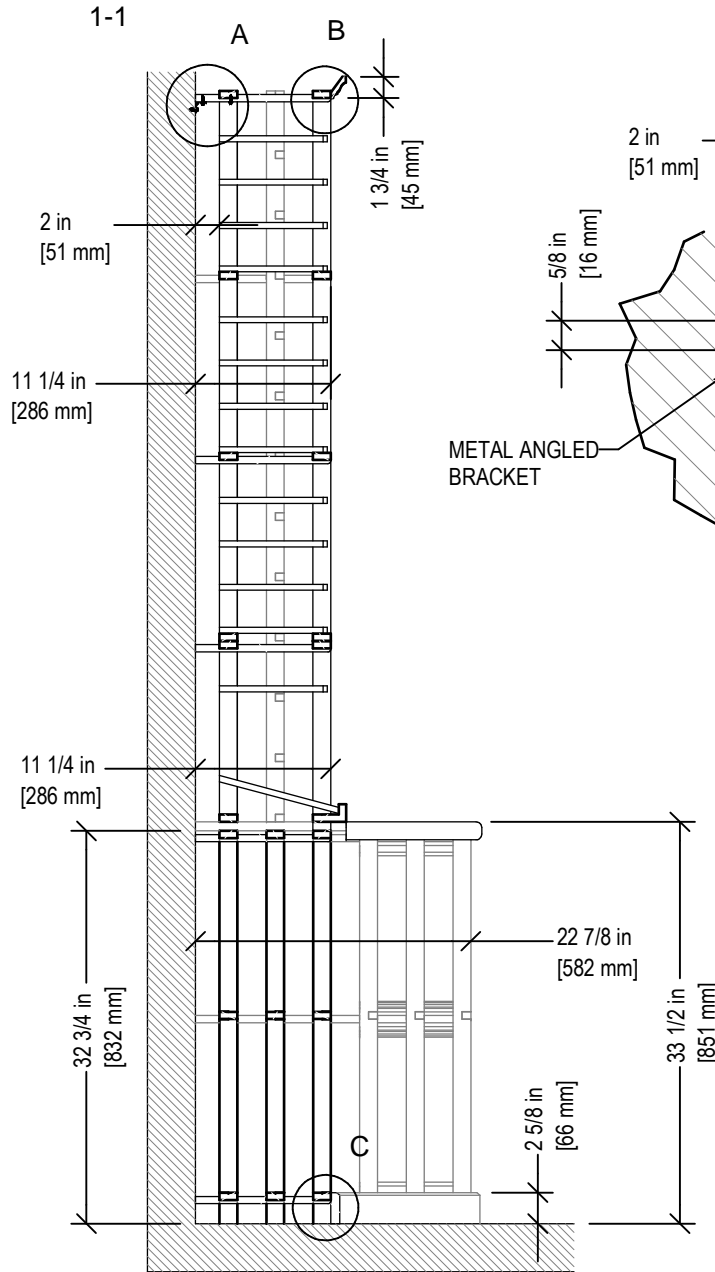
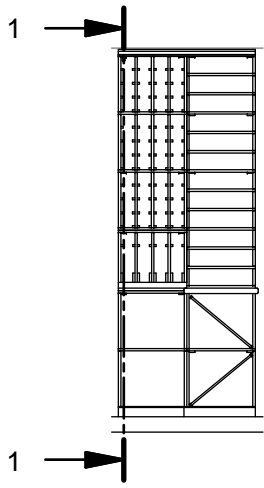
Designed by: **JK** Revision #: **0**

Authorized Dealer:

GENUWINE CELLARS

**GENERAL COLLECTOR'S EDITION
INSTALLATION INSTRUCTIONS**

1 of 4



GENUINE CELLARS

Designed by: JK Revision #: 0

Project: CE-INSTALLATION INSTRUCTIONS

Authorized Dealer:

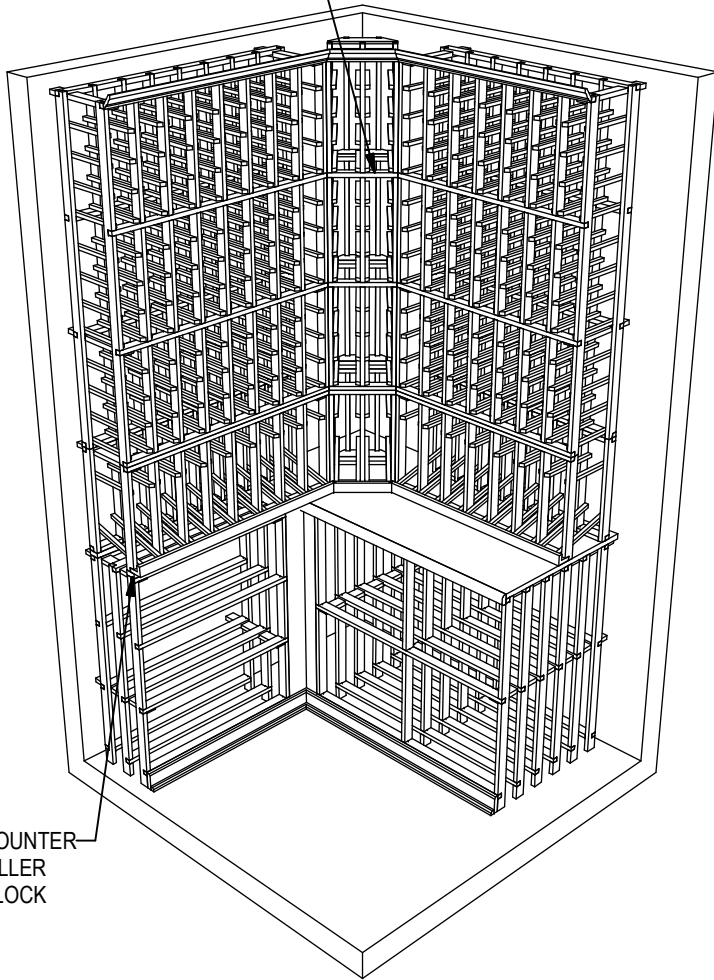
GENUINE CELLARS

CE - COMMON DETAILS

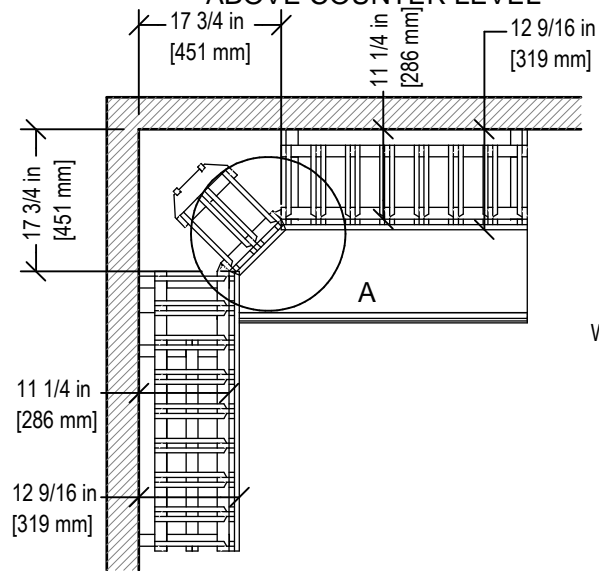
2 of 4

TYPICAL CORNER ASSEMBLY

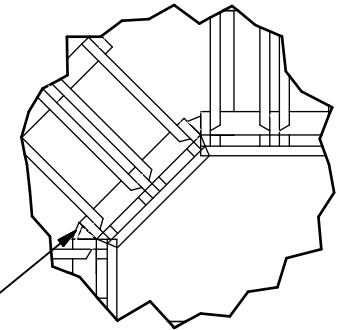
CORNER RACKING SECTION



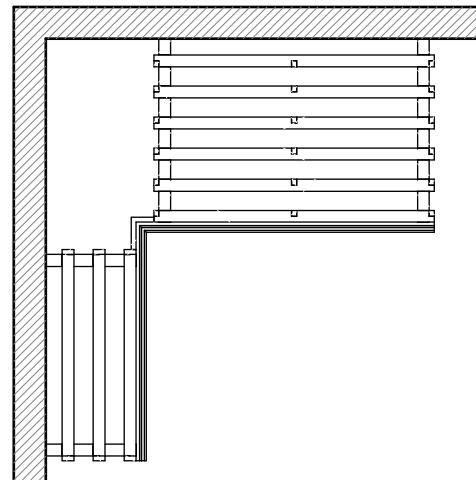
ABOVE COUNTER LEVEL



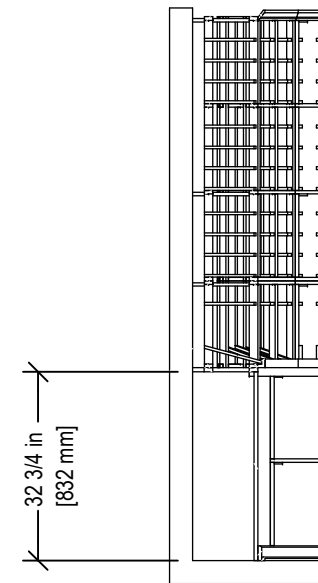
A



BELOW COUNTER LEVEL



B-B



GENUINE CELLARS

Project: *CE-INSTALLATION INSTRUCTIONS*

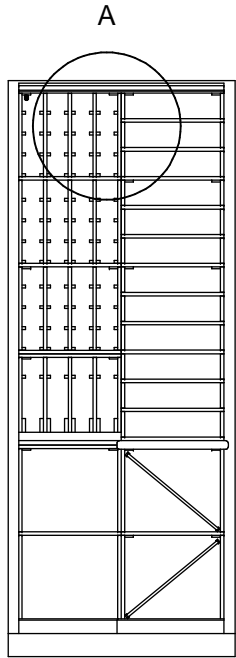
Designed by: **JK** Revision #: **0**

Authorized Dealer:

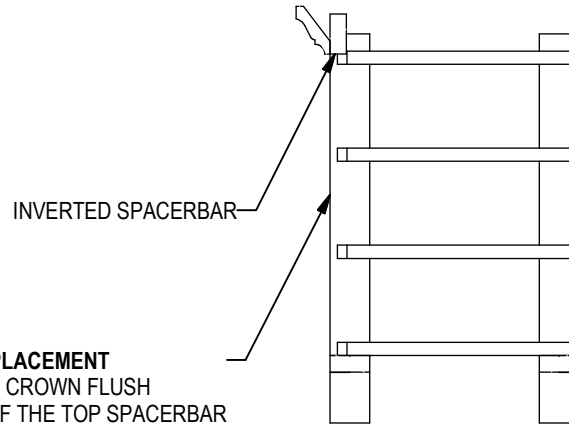
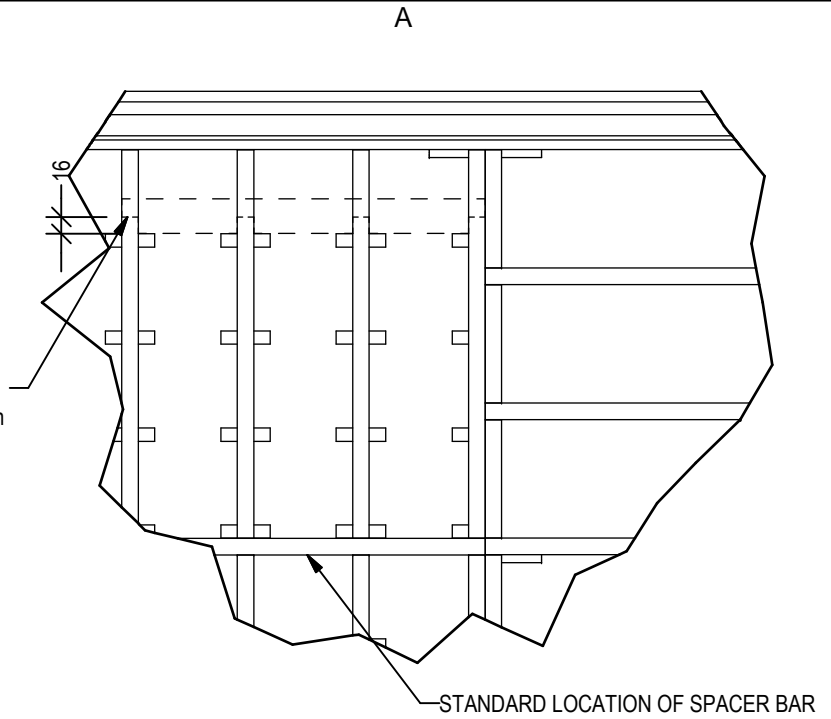
GENUINE CELLARS

CE - CORNER DETAIL

3 of 4



OPTIONAL SPACERBAR PLACEMENT
 - CUT UPRIGHTS (LADDERS OR FRAMES) 16mm
 ABOVE THE APPROPRIATE BLOCK TO
 OBTAIN THE DESIRED HEIGHT OF RACKING
 - SPACERBAR MUST BE PLACED INVERTED
 ON TOP OF THE CUT UPRIGHT
 AND THE CROWN IS THEN APPLIED



CROWN MOULDING PLACEMENT
 - MOUNT BOTTOM OF CROWN FLUSH
 WITH THE BOTTOM OF THE TOP SPACERBAR
 - THIS IS APPLICABLE WITH BOTH NORMAL
 AND INVERTED SPACERBARS